

SPECIFICATIONS

| MODELS | LM5020 | LM5030 |
|--|--|----------------------------------|
| Dimensions w/ base tires | 12 x 16.5 R4 Ind. Lug | 405/70 x 20 R1 AG |
| w/ optional larger tires | 12/75 x 18 R1 AG | 405/70 x 24 R1 AG |
| Ground clearance, in. (mm) | 10.6 (270) | 15.7 (400) |
| w/ optional larger tires | 12.2 (310) | 17.3 (440) |
| Coupler to front axle, in. (mm) | 3.2 (985) | 4.0 (1210) |
| Wheelbase, in. (mm) | 92.5 (2350) | 110.2 (2800) |
| Rear overhang, in. (mm) | 2.5 (765) | 2.2 (650) |
| Length of chassis, ft. (mm) | 11.8 (3590) | 13.2 (4040) |
| Length, no attachment, ft. (mm) | 13.5 (4096) | 15.4 (4700) |
| Cab width, in. (mm) | 33.9 (860) | 37 (940) |
| Overall height, in. (mm) | 75.2 (1910) | 80.3 (2040) |
| w/ optional larger tires | 77.0 (1950) | 82.0 (2080) |
| Wheel track, in. (mm) | 59 (1500) | 63 (1600) |
| Overall width, in. (mm) | 71 (1800) | 79 (2000) |
| Turn radius over forks, ft. (mm) | 14.8 (4500) | 16.1 (4900) |
| Inside turn radius, ft. (mm) | 4.6 (1400) | 5.5 (1670) |
| Turn radius over tires, ft. (mm) | 11.2 (3400) | 13.1 (4000) |
| Weight, approx., lbs. (kg) | 10,570 (4795) | 13,450 (6100) |
| Engine | | |
| Model | Yanmar 4TNV series 4-cyl diesel-Tier III | Perkins 4-cyl diesel-Tier III |
| Engine power (ECE R120), HP (kW) | 85 (62.5) @2500 RPM | 101 (74.5) @ 2200 RPM |
| Engine max. torque (ECE R120), ft-lbs (Nm) | 211 (286) @ 1850 RPM | 289 (392) @ 1400 RPM |
| Displacement, cu. in. (L) | 201 (3.3) | 268 (4.4) |
| Aspiration | Turbocharged / intercooled | Turbocharged / intercooled |
| Fuel tank capacity, gal (L) | 21 (80) | 26.5 (100) |
| Driveline | | |
| Hydrostatic transmission | Single Range | Dual Range |
| Speed range, mph (kph) | 0 - 16 (0-26) | 0 - 22 (0-35) |
| Parking brake | Self applying | Self applying |
| Selectable 3-mode steering | Front wheel, crab, 4-wheel | Front wheel, crab, 4-wheel |
| Service brakes | Hydraulic wet disc on front axle | Hydraulic wet disc on front axle |
| Hydraulics | | |
| Main pump | Gear | Gear |
| Capacity, gpm (lpm) | 21 (80) | 29 (110) |
| Pressure, PSI (Bar) | 2900 (230) | 2900 (230) |
| Aux. boom hydraulic circuit | Standard | Standard |
| Performance w/forks | | |
| Max. lift height ft. (m) | 19 (5.78) | 20.8 (6.35) |
| Max. lift capacity, lbs. (kg) | 5510 (2500) | 6175 (2800) |
| Lift capacity to full height, lbs. (kg) | 3750 (1700) | 4400 (2000) |
| Capacity at max. forward reach, lbs. (kg) | 1750 (800) | 1550 (700) |



UP TO THE CHORE AND CHALLENGE

A wide range of attachments is available to fit the standard and optional tool carriers, including:

- Buckets for heavy digging or moving high volumes of loose material
- Hay-handling grabs, spears, forks and grapples for bales of any size and shape
- Landscape attachments for soil preparation and planting, including tree and special spades
- Snow blowers, brooms, blades and buckets

| | LM5020 | LM5030 |
|---|--------|--------|
| Equipment S=standard; O=optional | | |
| Single joystick for boom functions | S | S |
| Flow-sharing proportional hyd. valve | S | S |
| Limited slip differential in front axle | S | S |
| Fully enclosed cab | S | S |
| Adjustable sun shade | S | S |
| Heater/pressurizer | S | - |
| Heater/pressurizer/air conditioning | O | S |
| Mechanical seat | S | - |
| Air ride seat | - | S |
| Selectable 3-mode steering | S | S |
| Road lights | S | S |
| Work lights | O | S |
| Hydraulic attachment lock | - | S |
| Continuous flow boom hydraulics | O | O |
| Smooth ride control | - | O |
| Reversible engine fan | - | O |
| Cold climate oil (below 20 deg. F) | O | O |

COMPACT TELEHANDLERS

NEW MODELS | LM5020 | LM5030



Learn more at www.newholland.com/na



Design, materials and/or specifications are subject to change without notice and without liability therefor. Specifications are applicable to units sold in Canada, the United States, its territories and possessions, and may vary outside these areas.

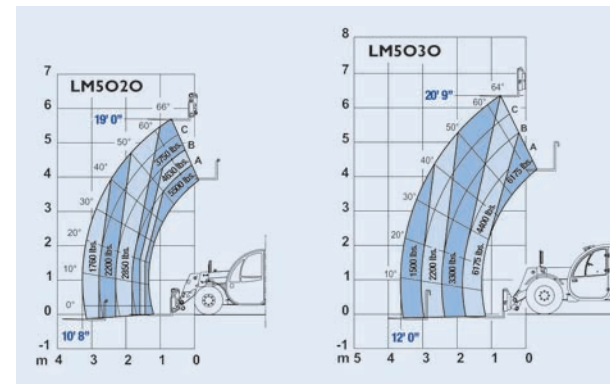
© 2011 CNH America LLC. All rights reserved. New Holland and CNH Capital are registered trademarks of CNH America LLC. Any trademarks referred to herein, in association with goods and/or services of companies other than CNH America LLC, are the property of those respective companies.



Safety begins with a thorough understanding of the equipment. Always make sure you and your operators read the Operator's Manual before using the equipment. Pay close attention to all safety and operating decals and never operate machinery without all shields, protective devices and structures in place.

GET IN. GET UNDER. GET AROUND. GET DONE — FASTER.

Get into your narrow poultry house or greenhouse with ease. Get under that low doorway to your supply building without worry. Get around silage bunkers, in-field equipment or construction sheds with little more than a turn or two of the steering wheel. With the new LM5030 and LM5020 compact telehandlers from New Holland, accessing the tight spaces and hard-to-reach corners of your mixed-farming operation, landscaping yard or municipal site is no longer a chore in itself.



GREATER POWER AND REACH

Delivering 101 hp that's ideal for hilly conditions, silage applications and moving heavy pallet loads, the LM503 telehandler offers big, usable power in a small footprint. The 85-hp LM5020 is a multi-purpose tool carrier designed with a skid steer-style mounting plate and hydraulic connections, putting almost any attachment at your disposal. Maximum lift height with the two-stage, telescoping boom ranges from 19 ft. (LM5020) to nearly 21 ft. (LM5030), with powerful lift capacities of 5,510 lbs. and 6,175 lbs., respectively.



HIGH-PERFORMANCE HYDRAULICS

Reliable gear pumps on the LM5030 and LM5020 deliver up to an impressive 29 gpm of hydraulic flow to meet the most demanding applications. One boom hydraulic circuit is standard; the LM5030 also features hydraulic attachment lock.



SMALL SIZE, BIG PERFORMANCE

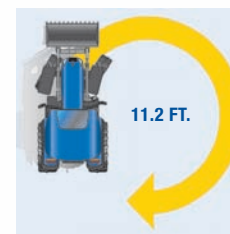
The new LM5030 and LM5020 telehandlers are as compact and low profile as any units in their class, but feature greater stability when lifting loads at full extension. That means big loading, stacking and pushing jobs are no problem for these small, sturdy material-handlers.

MORE VERSATILE AT EVERY TURN

Offering tremendous lift height and lift capacity combined with a tight turning radius, the LM5030 and LM5020 telehandlers are more versatile than a tractor fitted with a loader and more efficient than a larger skid steer, so you no longer have to compromise on productivity. Especially suited for mixed farming, these compact telehandlers let you do more work in more places — and do it faster.



GO-ANYWHERE MANEUVERABILITY



Three steering modes — two-wheel, four-wheel and crab steer — make working in the most confined spots a cinch. A turning radius as tight as 11.2 feet speeds loading cycle times and reduces back-and-forth maneuvering, letting you get in and out of small buildings and yards effortlessly. A hydrostatic transmission with electro-hydraulic power shuttle and an "inching pedal" increases responsiveness for greater productivity in nearly any task. Full-time four-wheel-drive powers you through mud, wet fields and snow.

COMFORT AND CONTROL ON THE JOB

A spacious cab — larger than most competitive models — belies the compact size of these machines and provides 360-degree visibility. The LM5020 cab comes with a heater, adjustable seat and sunshade; A/C is optional. The LM5030 is equipped with an air-ride seat, A/C standard and a comfort package. A single multi-function joystick provides precise control over all boom functions, including raise/lower, telescoping and attachment curl/dump and auxiliary hydraulics.